

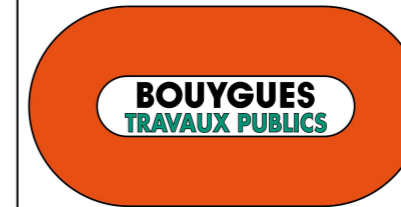
Activity ID	Activity Name	Dur	Start	Finish	2026		
					May	Jun	Jul
<b>HKT2 "Mid Oct26" Revised Accelerated Programme DD 30A</b>							
<b>Construction</b>							
<b>Trunk Road T2</b>							
<b>01 West Ventilation Building - WVB</b>							
<b>WVB - Remaining works after FSI</b>							
<b>External Works</b>							
WVB1820	WVB - External Drainage (EVA side)	515	02-Dec-24 A	30-Apr-26 A	WVB - External Drainage (EVA side)		
WVB1950	WVB - Fence Wall (KFR Side)	64	02-Mar-26 A	05-May-26	WVB - Fence Wall (KFR Side)		
WVB1960	WVB - Gate Design Confirmation	0		01-May-26*	WVB - Gate Design Confirmation		
WVB1970	WVB - Gate Installation	50	02-May-26	20-Jun-26	WVB - Gate Installation		
<b>Final works</b>							
WVB1980	WVB - Road Side Kerb and Channel (EVA side)	19	20-Apr-26 A	09-May-26	WVB - Road Side Kerb and Channel (EVA side)		
WVB1880	WVB - Backfilling and Subbase	42	10-May-26	20-Jun-26	WVB - Backfilling and Subbase		
WVB1990	WVB - Road Side Kerb and Channel (KFR side)	21	10-May-26	30-May-26	WVB - Road Side Kerb and Channel (KFR side)		
WVB2000	WVB - Remaining Soft Landscape	31	31-May-26	30-Jun-26	WVB - Remaining Soft Landscape		
WVB1860	WVB - Flexible Pavement	14	21-Jun-26	04-Jul-26	WVB - Flexible Pavement		
WVB1901	KD-29 - Completion of Section 9G - Remaining Landscape	0		30-Jun-26*	KD-29 - Completion of Section 9G - Remaining Landscape		
WVB1930	WVB - Handover with HyD	20	05-Jul-26	24-Jul-26	WVB - Handover with HyD		
<b>02 AtGrade Road - AGR</b>							
<b>Kiosk</b>							
AGR1100	Kiosk - TCSS	58	03-Apr-26 A	30-May-26	Kiosk - TCSS		
AGR1110	Kiosk - Reday for FSI	6	31-May-26	05-Jun-26*	Kiosk - Reday for FSI		
<b>AGR - Road &amp; Drainage works</b>							
AGR1170	AGR - Central Divider	18	13-Apr-26 A	30-Apr-26 A	AGR - Central Divider		
AGR1150	AGR - Remaining Barrier (after ramp demobilisation)	6	15-Jul-26	20-Jul-26	AGR - Remaining Barrier		
<b>AGR - Road Lighting</b>							
AGR1160	AGR & DPR - Road Lighting Installation	30	21-Jul-26	19-Aug-26	AGR & DPR - Road Lighting Installation		
<b>Temporary Ramp for CKR Opening</b>							
A229450400	DPR - WB Temp. Ramp demolision (after last usage of MSV)	24	21-Jun-26	14-Jul-26	DPR - WB Temp. Ramp demolision (after last usage of MSV)		
<b>03 Depressed Road - DPR</b>							
<b>DPR - Road Works</b>							
<b>Rising Main</b>							
A229450390	DPR - Civil - Pillar Box	48	13-Apr-26 A	30-May-26	DPR - Civil - Pillar Box		
A229450410	DPR - Civil - Central Divider	30	31-May-26	29-Jun-26	DPR - Civil - Central Divider		
<b>Movement Joint and Cut-off Drain</b>							
A229451140	DPR - MJ & Cut-off Drain Westbound batch 1	77	01-Mar-26 A	16-May-26	DPR - MJ & Cut-off Drain Westbound batch 1		
A229451160	DPR - MJ & Cut-off Drain Eastbound batch 1	48	13-Apr-26 A	30-May-26	DPR - MJ & Cut-off Drain Eastbound batch 1		
A229451150	DPR - MJ & Cut-off Drain Westbound batch 2	28	17-May-26	13-Jun-26	DPR - MJ & Cut-off Drain Westbound batch 2		
A229451170	DPR - MJ & Cut-off Drain Eastbound batch 2	31	31-May-26	30-Jun-26	DPR - MJ & Cut-off Drain Eastbound batch 2		
<b>06 Launching Shaft &amp; C&amp;C Tunnel - LSCC</b>							
<b>LSCC - Structure works</b>							
<b>Launching Shaft</b>							
<b>LS - Miscellaneous Structural Openings</b>							
<b>WB NCP wall box out structure (subject to temporary cable relocation, TBM BT 8)</b>							
LSCC10200	LSCC - WB NCP wall box out structure	44	03-Apr-26 A	16-May-26	LSCC - WB NCP wall box out structure		
LSCC10461	LSCC - WB NCP remaining internal structure work	14	17-May-26	30-May-26	LSCC - WB NCP remaining internal structure work		
<b>LSCC - Backfilling &amp; Dwall Dismantling</b>							
LSCC1000	Demoliton of Strutting Beams, C&C Bulkhead Wall	173	01-Dec-25 A	22-May-26	Demoliton of Strutting Beams, C&C Bulkhead Wall		
<b>07 Tunnel Sub-sea (TSS)</b>							
<b>TSS - TBM Excavation from Kai Tak</b>							



Activity ID	Activity Name	Dur	Start	Finish	2026		
					May	Jun	Jul
<b>Eastbound - TBM S1282</b>							
<b>TBM2 Rescue</b>							
<b>Seawall Reinstatement</b>							
A229451020	Phase 5 (Bay 4 to Bay 5) Seawall Reinstatement	187	18-Dec-25 A	22-Jun-26	Phase 5 (Bay 4 to Bay 5) Seawall Reinstatement		
A229450970	Phase 3 (Bay 6 to Bay 8) Seawall Reinstatement	105	16-Jan-26 A	01-May-26	Phase 3 (Bay 6 to Bay 8) Seawall Reinstatement		
A229451010	Phase 4 (Bay 1 to Bay 3) Seawall Reinstatement	127	16-Feb-26 A	22-Jun-26	Phase 4 (Bay 1 to Bay 3) Seawall Reinstatement		
A229451040	Target Handover to VTC	0		19-Jul-26*			◆ Target Handover to VTC
<b>TSS - Tunnel Civil Works</b>							
<b>Westbound (WB)</b>							
<b>WB TSS - Black paint</b>							
<b>After TBM1 Dismantling</b>							
TC1490	WB TSS - Black paint from CP26 to CP29	76	14-Feb-26 A	30-Apr-26 A	WB TSS - Black paint from CP26 to CP29		
TC11590	WB TSS - Black paint from CP29 to CP31 (no fireboard area)	38	24-Mar-26 A	30-Apr-26 A	WB TSS - Black paint from CP29 to CP31 (no fireboard area)		
<b>WB TSS - Below Road Level Installation</b>							
<b>Low Point @ CP12</b>							
TC11380	WB TSS - Low Point Sump Pit Waterproofing and Testing	62	31-Mar-26 A	31-May-26	WB TSS - Low Point Sump Pit Waterproofing and Testing		
<b>Low Point @ CP27</b>							
TC1450	WB TBM Tunnel - Low Point Sump Pit waterproofing & testing	58	03-Apr-26 A	30-May-26	WB TBM Tunnel - Low Point Sump Pit waterproofing & testing		
<b>Eastbound (EB)</b>							
<b>EB TSS - TBM Slurry Pipes &amp; Temporary Services</b>							
<b>Pipe dismantling &amp; relocation after TBM2 Breakthrough</b>							
<b>CP7 to CP22</b>							
A229447730	TSS - EB NCPS Wall Pipe Dismantling from FT to CP22	64	26-Feb-26 A	30-Apr-26 A	TSS - EB NCPS Wall Pipe Dismantling from FT to CP22		
<b>EB TSS - Civil Works After TBM2 Dismantled</b>							
<b>EB TSS - Service Gallery</b>							
TC0030	EB TSS - Service Gallery R1007 to R1039	7	24-Apr-26 A	01-May-26	EB TSS - Service Gallery R1007 to R1039		
TC0060	EB TSS - ISIG Dismantling Stage	6	01-May-26	06-May-26	EB TSS - ISIG Dismantling Stage		
TC0090	EB TSS - Service Gallery R1060 to R1056 (Reverse Installation by Sliding)	6	07-May-26	12-May-26	EB TSS - Service Gallery R1060 to R1056 (Reverse Installation by Sliding)		
TC0070	EB TSS - Service Gallery R1040 to 1056 (Monorail)	9	13-May-26	21-May-26	EB TSS - Service Gallery R1040 to 1056 (Monorail)		
<b>EB TSS - Corbel</b>							
TC220	EB TSS - Corbel Structure from CP27 to CP28 (3R/d)	17	20-Apr-26 A	06-May-26	EB TSS - Corbel Structure from CP27 to CP28 (3R/d)		
TC230	EB TSS - Corbel Structure from CP28 to CP29 (R1021) (6R/d)	8	07-May-26	14-May-26	EB TSS - Corbel Structure from CP28 to CP29 (R1021) (6R/d)		
TC300	EB TSS - Corbel Curing up to CP28	7	07-May-26	13-May-26	EB TSS - Corbel Curing up to CP28		
TC240	EB TSS - Corbel Structure from R1021 to R1059 (before EW) (6R/d)	7	15-May-26	21-May-26	EB TSS - Corbel Structure from R1021 to R1059 (before EW) (6R/d)		
<b>EB TSS - OHVD</b>							
TC340	EB TSS - OHVD up to CP26	13	30-Apr-26 A	12-May-26	EB TSS - OHVD up to CP26		
TC350	EB TSS - OHVD up to CP27 (R930)	7	14-May-26	20-May-26	EB TSS - OHVD up to CP27 (R930)		
TC360	EB TSS - OHVD up to CP28 (R975)	7	21-May-26	27-May-26	EB TSS - OHVD up to CP28 (R975)		
TC380	EB TSS - OHVD R975 to R1040	12	29-May-26*	09-Jun-26	EB TSS - OHVD R975 to R1040		
<b>EB TSS - Road Barrier</b>							
TC10160	EB TSS - Road Barrier up to CP25	8	01-May-26	08-May-26	EB TSS - Road Barrier up to CP25		
TC10190	EB TSS - Road Barrier up to R954	8	09-May-26	16-May-26	EB TSS - Road Barrier up to R954		
TC11160	EB TSS - Road Barrier R955 to R1034	9	17-May-26	25-May-26	EB TSS - Road Barrier R955 to R1034		
TC11170	EB TSS - Road Barrier R1035 to R1061	6	26-May-26	31-May-26	EB TSS - Road Barrier R1035 to R1061		
<b>EB TSS - Fire Board - Tunnel Crown with deletion up to Ch8850</b>							
D12605	EB TSS - Fire board (Crown) up to CP26	10	25-Apr-26 A	04-May-26	EB TSS - Fire board (Crown) up to CP26		
D12615	EB TSS - Fire board (Crown) up to CP27	8	05-May-26	12-May-26	EB TSS - Fire board (Crown) up to CP27		
TC270	EB TSS - Fire board (Crown) CP27 (R930) to CP28 (R975)	8	13-May-26	20-May-26	EB TSS - Fire board (Crown) CP27 (R930) to CP28 (R975)		
TC280	EB TSS - Fire board (Crown) R975 to R1005	13	21-May-26	02-Jun-26	EB TSS - Fire board (Crown) R975 to R1005		
<b>EB TSS - Fire Board - Road level with deletion up to Ch8850</b>							
TC430	EB TSS - Fire Board - Walls & OHVD Soffit up to CP25	60	08-Mar-26 A	06-May-26	EB TSS - Fire Board - Walls & OHVD Soffit up to CP25		

- ◆ Milestones
- Planned Bar
- Actual Bar

ED/2018/04 Trunk Road T2 and Infrastructure Works  
for Developments at South Apron  
Three Months Rolling Programme (May26-Jul26)



Date	Revision	Checked	Approved

Activity ID	Activity Name	Dur	Start	Finish	2026		
					May	Jun	Jul
TC440	EB TSS - Fire Board - Walls & OHVD Soffit up to CP26	8	07-May-26	14-May-26	EB TSS - Fire Board - Walls & OHVD Soffit up to CP26		
TC450	EB TSS - Fire Board - Walls & OHVD Soffit up to CP27	10	15-May-26	24-May-26	EB TSS - Fire Board - Walls & OHVD Soffit up to CP27		
TC11740	EB TSS - HyD inspection before black paint & E&M bracket CP25	7	15-May-26	21-May-26	EB TSS - HyD inspection before black paint & E&M bracket CP25 to CP26		
TC11710	EB TSS - HyD inspection before black paint & E&M bracket CP26	7	25-May-26	31-May-26	EB TSS - HyD inspection before black paint & E&M bracket CP26 to CP27		
TC460	EB TSS - Fire Board - Walls & OHVD Soffit up to CP28	14	25-May-26	07-Jun-26	EB TSS - Fire Board - Walls & OHVD Soffit up to CP28		
TC470	EB TSS - Fire Board - Walls & OHVD Soffit from CP28 to R1005	12	08-Jun-26	19-Jun-26	EB TSS - Fire Board - Walls & OHVD Soffit from CP28 to R1005		
TC480	EB TSS - Fire Board - Gantry dismantling at CKL	8	20-Jun-26	27-Jun-26	EB TSS - Fire Board - Gantry dismantling at CKL		
<b>EB TSS - E&amp;M Brackets &amp; Final TCSS Civil Provision</b>		75	20-Apr-26 A	03-Jul-26			
TC630	EB TSS - E&M Brackets CP23 to CP24	21	20-Apr-26 A	10-May-26	EB TSS - E&M Brackets CP23 to CP24		
TC640	EB TSS - E&M Brackets CP24 to CP25	8	11-May-26	18-May-26	EB TSS - E&M Brackets CP24 to CP25		
TC650	EB TSS - E&M Brackets CP25 to CP26	9	19-May-26	27-May-26	EB TSS - E&M Brackets CP25 to CP26		
TC660	EB TSS - E&M Brackets CP26 to CP27 (R930)	9	28-May-26	05-Jun-26	EB TSS - E&M Brackets CP26 to CP27 (R930)		
TC670	EB - TBM Tunnel - E&M Bracket CP27 to CP28	3	08-Jun-26	10-Jun-26	EB - TBM Tunnel - E&M Bracket CP27 to CP28		
TC690	EB - TBM Tunnel - E&M Bracket CP28 to CP29	3	20-Jun-26	22-Jun-26	EB - TBM Tunnel - E&M Bracket CP28 to CP29		
TC710	EB - TBM Tunnel - TCSS Final Civil provision at OHVD soffit	7	27-Jun-26	03-Jul-26	EB - TBM Tunnel - TCSS Final Civil provision at OHVD soffit		
<b>EB TSS - Black paint</b>		33	01-Jun-26	03-Jul-26			
TC720	EB - TBM Tunnel - Black paint CP25 to CP27	7	01-Jun-26	07-Jun-26	EB - TBM Tunnel - Black paint CP25 to CP27		
TC730	EB - TBM Tunnel - Black paint from CP27 up to end wall	7	27-Jun-26	03-Jul-26	EB - TBM Tunnel - Black paint from CP27 up to end wall		
<b>EB TSS - Below Road Level Installation</b>		495	17-Feb-25 A	26-Jun-26			
<b>CP26-30 MiMEP</b>		14	22-May-26	04-Jun-26			
TC11110	EB TSS - HyD Inspection for SG Installation	7	22-May-26	28-May-26	EB TSS - HyD Inspection for SG Installation		
TC0130	EB TSS - All Remaining Service Gallery MiMEP & Civil Provision	7	29-May-26	04-Jun-26	EB TSS - All Remaining Service Gallery MiMEP & Civil Provision		
<b>Low Point Sump Pit</b>		495	17-Feb-25 A	26-Jun-26			
<b>Low Point @ CP12</b>		468	17-Feb-25 A	30-May-26			
TC11330	EB TSS - Low Point Sump Pit waterproofing & testing (after TBM c	468	17-Feb-25 A	30-May-26	EB TSS - Low Point Sump Pit waterproofing & testing (after TBM dismantling)		
<b>CP27</b>		69	19-Apr-26 A	26-Jun-26			
TC700	EB TSS - Low Point Sump Pit waterproofing & testing	69	19-Apr-26 A	26-Jun-26	EB TSS - Low Point Sump Pit waterproofing & testing		
<b>FSI Room</b>		21	01-May-26	21-May-26			
TC070	EB TSS - FSI Room 9 - civil works	21	01-May-26*	21-May-26	EB TSS - FSI Room 9 - civil works		
<b>EB TSS - Plant Demobilisation</b>		12	22-May-26	02-Jun-26			
<b>Corbel Gantry Dismantling</b>		7	27-May-26	02-Jun-26			
TC250	EB - TBM Tunnel - ISCG Corbel Gantry & Formwork dismantling a	7	27-May-26	02-Jun-26	EB - TBM Tunnel - ISCG Corbel Gantry & Formwork dismantling at CKL		
<b>Monorail Dismantling</b>		7	22-May-26	28-May-26			
TC0080	EB TBM Tunnel - Monorail Removal for final dismantling	7	22-May-26	28-May-26	EB TBM Tunnel - Monorail Removal for final dismantling		
<b>08 CKL Tunnel &amp; End Wall Transition</b>		66	27-Apr-26 A	01-Jul-26			
<b>Eastbound (EB)</b>		66	27-Apr-26 A	01-Jul-26			
<b>EB CKL - After TBM breakthrough</b>		66	27-Apr-26 A	01-Jul-26			
<b>EB Remaining Civil Works Summary</b>		61	27-Apr-26 A	26-Jun-26			
TA1371	Summary - EB Remaining Civil Work (TB1000 to TC11690)	61	27-Apr-26 A	26-Jun-26	Summary - EB Remaining Civil Work (TB1000 to TC11690)		
<b>Eastbound (EB) Final Civil Works</b>		66	27-Apr-26 A	01-Jul-26			
<b>Service Gallery</b>		16	27-Apr-26 A	12-May-26			
TB1000	EB - Concrete Breaking & Temp fill removal	5	27-Apr-26 A	01-May-26	EB - Concrete Breaking & Temp fill removal		
TB1020	EB - CKL & Endwall Precast/In-situ SG Installation, Waterproofing	8	02-May-26	09-May-26	EB - CKL & Endwall Precast/In-situ SG Installation, Waterproofing		
TB1040	EB - Drainage & Road Slab for Precast & In-situ SG	3	10-May-26	12-May-26	EB - Drainage & Road Slab for Precast & In-situ SG		
<b>End Wall Civil &amp; Structure Works</b>		55	02-May-26	25-Jun-26			
TB1010	EB - Preparation for Endwall Construction	2	02-May-26	03-May-26	EB - Preparation for Endwall Construction		
TB1030	EB - End Wall Kicker & Wall	18	04-May-26	21-May-26	EB - End Wall Kicker & Wall		
TB1060	EB - TSS/CKL End Wall - Corbel (R1059-EW)	5	22-May-26	26-May-26	EB - TSS/CKL End Wall - Corbel (R1059-EW)		
TB1080	EB - End Wall Parapet	3	27-May-26	29-May-26	EB - End Wall Parapet		
TB1100	EB - Temporary L-frame Construction	1	30-May-26	30-May-26	EB - Temporary L-frame Construction		
TB1390	EB - End Wall Crown Falsework/Formwork Erection	8	31-May-26	07-Jun-26	EB - End Wall Crown Falsework/Formwork Erection		

- ◆ ◆ Milestones
- Planned Bar
- Actual Bar

ED/2018/04 Trunk Road T2 and Infrastructure Works  
for Developments at South Apron  
Three Months Rolling Programme (May26-Jul26)



Date	Revision	Checked	Approved

Activity ID	Activity Name	Dur	Start	Finish	2026		
					May	Jun	Jul
TB1400	EB - End Wall Crown Concreting & Falsework Dismantling	6	08-Jun-26	13-Jun-26		EB - End Wall Crown Concreting & Falsework Dismantling	
TB1160	EB- TSS/CKL End Wall E&M Bracket (CP29-EW)	3	23-Jun-26	25-Jun-26			EB- TSS/CKL End Wall E&M Bracket (CP29-EW)
<b>OHVD</b>		14	13-May-26	26-May-26			
TB1070	EB D&Br - Type A OHVD (2 bay)	4	13-May-26	16-May-26	EB D&Br - Type A OHVD (2 bay)		
TB1130	EB D&Br - Type A OHVD (Last 2 bays)	4	17-May-26	20-May-26	EB D&Br - Type A OHVD (Last 2 bays)		
TB1170	EB D&Br - Type A OHVD Formwork Dismantling	6	21-May-26	26-May-26	EB D&Br - Type A OHVD Formwork Dismantling		
<b>Barrier</b>		3	27-May-26	29-May-26			
TB1190	EB - Type A Dr&Br - Remaining Parapet	3	27-May-26	29-May-26	EB - Type A Dr&Br - Remaining Parapet		
<b>E&amp;M Brackets &amp; Black paint</b>		10	27-May-26	05-Jun-26			
TB1360	EB - Defect Rectification and HyD inspection, Black paint	3	27-May-26	29-May-26	EB - Defect Rectification and HyD inspection, Black paint		
TB1370	EB - Type A Dr&Br - Remaining Bracket	7	30-May-26	05-Jun-26	EB - Type A Dr&Br - Remaining Bracket		
<b>EB TSS Final OHVDs</b>		18	14-Jun-26	01-Jul-26			
TC400	EB TSS - OHVD Lifting Batch 1-3 (16 pcs)	7	14-Jun-26	20-Jun-26		EB TSS - OHVD Lifting Batch 1-3 (16 pcs)	
TC11690	EB TSS - Final Cast in-situ OHVD (5 pcs)	6	21-Jun-26	26-Jun-26		EB TSS - Final Cast in-situ OHVD (5 pcs)	
TC11700	Tunnel - Provision for Cleaning	5	27-Jun-26	01-Jul-26		Tunnel - Provision for Cleaning	
TC11750	EB TSS - OHVD Formwork Dismantling	4	27-Jun-26	30-Jun-26		EB TSS - OHVD Formwork Dismantling	
<b>EB CKL - TCSS Civil Provision</b>		3	06-Jun-26	08-Jun-26			
TB1210	EB - Type A Dr&Br - Remaining TCSS Civil Provision	3	06-Jun-26	08-Jun-26		EB - Type A Dr&Br - Remaining TCSS Civil Provision	
<b>09 Cross Passages</b>		112	28-Feb-26 A	19-Jun-26			
<b>Cross Passages @ TSS &amp; CKL Tunnel (CP7 to CP33)</b>		112	28-Feb-26 A	19-Jun-26			
<b>CP25 by Mini TBM</b>		85	28-Feb-26 A	23-May-26			
A8340	CP25 - EB Tym Remaining Civil Works (Fireboard, Black Paint & E	71	28-Feb-26 A	09-May-26	CP25 - EB Tym Remaining Civil Works (Fireboard, Black Paint & E&M Brackets)		
A8280	CP25 - E&M Installation	14	10-May-26	23-May-26	CP25 - E&M Installation		
<b>CP26 by Mini TBM</b>		28	17-Apr-26 A	14-May-26			
A8370	CP26 - WB/EB Tym Remaining Civil Works (Fireboard, Black Pain	14	17-Apr-26 A	30-Apr-26 A	CP26 - WB/EB Tym Remaining Civil Works (Fireboard, Black Paint & E&M Brackets)		
A8300	CP26 - E&M Installation	14	01-May-26	14-May-26	CP26 - E&M Installation		
<b>CP27 by Mini TBM</b>		61	17-Apr-26 A	16-Jun-26			
A8350	CP27 - WB Tympanum Remaining Civil Work (Fireboard, Black Pa	14	17-Apr-26 A	30-Apr-26 A	CP27 - WB Tympanum Remaining Civil Work (Fireboard, Black Paint & E&M Brackets)		
A8360	CP27 - EB Tympanum Remaining Civil Work (Parapet, Fireboard,	9	25-May-26	02-Jun-26	CP27 - EB Tympanum Remaining Civil Work (Parapet, Fireboard, Black Paint & E&M Brackets)		
A8310	CP27 - E&M Installation	14	03-Jun-26	16-Jun-26	CP27 - E&M Installation		
<b>CP28 by D&amp;Br</b>		47	01-May-26	16-Jun-26			
TD1510	CP28 - Remaining Collar/Lining structure (EB side)	24	01-May-26	24-May-26	CP28 - Remaining Collar/Lining structure (EB side)		
TD1340	CP28 - EB Remaining Civil Work at Special Segment (Fireboard, E	9	25-May-26	02-Jun-26	CP28 - EB Remaining Civil Work at Special Segment (Fireboard, Black Paint & E&M Brackets) (subj. to CP28 Crown FB)		
TD1300	CP28 - E&M Installation	14	03-Jun-26	16-Jun-26	CP28 - E&M Installation		
<b>CP29 by D&amp;Br</b>		64	17-Apr-26 A	19-Jun-26			
TD1460	CP29 - WB Tympanum Remaining Civil Work (Fireboard, Black Pa	14	17-Apr-26 A	30-Apr-26 A	CP29 - WB Tympanum Remaining Civil Work (Fireboard, Black Paint & E&M Brackets)		
TD1500	CP29 - Remaining Collar/Lining structure (EB side)	21	01-May-26	21-May-26	CP29 - Remaining Collar/Lining structure (EB side)		
TD1470	CP29 - EB Remaining Civil Work at Special Segment (Black Paint	3	03-Jun-26	05-Jun-26	CP29 - EB Remaining Civil Work at Special Segment (Black Paint & E&M Brackets)		
TD1390	CP29 - E&M Installation	14	06-Jun-26	19-Jun-26	CP29 - E&M Installation		
<b>CP30 Remaining Works</b>		12	01-May-26	12-May-26			
<b>CP30 remaining works</b>		12	01-May-26	12-May-26			
TD1210	CP30 - E&M Installation	12	01-May-26	12-May-26	CP30 - E&M Installation		
<b>CP31 Remaining Works</b>		12	01-May-26	12-May-26			
<b>CP31 remaining works</b>		12	01-May-26	12-May-26			
TD1240	CP31 - E&M Installation	12	01-May-26	12-May-26	CP31 - E&M Installation		
<b>10 East Ventilation Building - EVB</b>		92	01-May-26	31-Jul-26			
<b>VO - Recovery Vehicle Base (RVB) Construction</b>		92	01-May-26	31-Jul-26			
EVB1715	RVB - Structural Works and Canopy	40	01-May-26	09-Jun-26	RVB - Structural Works and Canopy		
EVB1630	RVB - Drainage works	21	10-Jun-26	30-Jun-26		RVB - Drainage works	
EVB1695	RVB - Paving works	31	01-Jul-26	31-Jul-26			
<b>11 Tunnel E&amp;M Installation</b>		125	29-Mar-26 A	31-Jul-26			

- ◆ Milestones
- █ Planned Bar
- █ Actual Bar

ED/2018/04 Trunk Road T2 and Infrastructure Works  
for Developments at South Apron  
Three Months Rolling Programme (May26-Jul26)



Date	Revision	Checked	Approved

Activity ID	Activity Name	Dur	Start	Finish	2026		
					May	Jun	Jul
<b>Key Handover Date to E&amp;M Team</b>		33	31-May-26	03-Jul-26			
TC770	EB - Full Access for HV Cable/FS Water Installation	0		31-May-26	◆ EB - Full Access for HV Cable/FS Water Installation		
TC760	EB - Full Access for MIMEP connection after MIMEP installation	0		04-Jun-26	◆ EB - Full Access for MIMEP connection after MIMEP installation		
TC740	EB - Full Access for LV Cable Installation (After Formwork Dism.)	0		30-Jun-26		◆ EB - Full Access for LV Cable Installation (After Formwork Dism.)	
TC780	EB - Full Access for TVS/Damper Installation (After Final Cleaning)	0		01-Jul-26		◆ EB - Full Access for TVS/Damper Installation (After Final Cleaning)	
TC750	EB - Full Access for Tunnel Lighting (After Black Paint)	0		03-Jul-26		◆ EB - Full Access for Tunnel Lighting (After Black Paint)	
TC11820	EB - Full Access for TCSS Installation (After TCSS Civil Provision)	0		03-Jul-26		◆ EB - Full Access for TCSS Installation (After TCSS Civil Provision)	
<b>WB - E&amp;M Works</b>		93	29-Mar-26 A	29-Jun-26			
<b>WB - HV Cabling &amp; HV Power On</b>		30	01-May-26	30-May-26			
TE1180	WB Tunnel - Permanent HV Cable laying (Final Section)	18	01-May-26	18-May-26	WB Tunnel - Permanent HV Cable laying (Final Section)		
TE1220	WB Tunnel - Final HV Power On Change Over	12	19-May-26	30-May-26	WB Tunnel - Final HV Power On Change Over		
<b>WB - LV Cabling &amp; LV Power On</b>		83	08-Apr-26 A	29-Jun-26			
E&MC1200	WB TSS - CP24-EVB E&M installation (Final Stage subject to Last Bracket available)	36	08-Apr-26 A	13-May-26	WB TSS - CP24-EVB E&M installation (Final Stage subject to Last Bracket available)		
E&MC1190	WB SUS to CP2 - E&M Installation (Final Stage)	30	31-May-26	29-Jun-26		WB SUS to CP2 - E&M Installation (Final Stage)	
<b>WB - Below Road Level E&amp;M Installation</b>		51	29-Mar-26 A	18-May-26			
<b>MIMEP</b>		51	29-Mar-26 A	18-May-26			
TF070	WB TSS - Service Gallery E&M Installation	51	29-Mar-26 A	18-May-26	WB TSS - Service Gallery E&M Installation		
<b>EB - E&amp;M Works</b>		83	10-May-26	31-Jul-26			
<b>EB - HV Cabling &amp; HV Power On</b>		11	01-Jun-26	11-Jun-26			
TE1190	EB Tunnel - Permanent HV Cable laying (Final Section)	8	01-Jun-26	08-Jun-26	EB Tunnel - Permanent HV Cable laying (Final Section)		
TE230	EB Tunnel - Final HV Power On Change Over	3	09-Jun-26	11-Jun-26	EB Tunnel - Final HV Power On Change Over		
<b>EB - LV Cabling &amp; LV Power On</b>		83	10-May-26	31-Jul-26			
E&MC1100	EB TSS - CP16-20 E&M installation	35	10-May-26	13-Jun-26	EB TSS - CP16-20 E&M installation		
E&MC1120	EB TSS - CP20-28 - E&M installation	25	03-Jun-26	27-Jun-26	EB TSS - CP20-28 - E&M installation		
E&MC2100	EB TSS - E&M Installation CP28 to EVB for VAC T&C (Final Stage)	5	01-Jul-26	05-Jul-26		EB TSS - E&M Installation CP28 to EVB for VAC T&C (Final Stage)	
E&MC2120	EB TSS - Final Tunnel Lighting	26	06-Jul-26	31-Jul-26			
E&MC2130	EB TSS - Final LV Cabling	26	06-Jul-26	31-Jul-26			
<b>EB - Below Road Level E&amp;M Installation</b>		55	22-May-26	15-Jul-26			
<b>MIMEP</b>		30	05-Jun-26	04-Jul-26			
TE1230	EB TSS - Window for Final (LV Cable) MIMEP Connection & Conn	30	05-Jun-26	04-Jul-26		EB TSS - Window for Final (LV Cable) MIMEP Connection & Conn	
<b>FS Room</b>		28	22-May-26	18-Jun-26			
TC150	EB TBM Tunnel - FS Control Room E&M Installation	28	22-May-26	18-Jun-26	EB TBM Tunnel - FS Control Room E&M Installation		
<b>Low Point Sump</b>		19	27-Jun-26	15-Jul-26			
TE190	EB TSS - Low Point Sump installation CP27	14	27-Jun-26	10-Jul-26		EB TSS - Low Point Sump installation CP27	
TE250	EB TSS - Low Point Sump T&C CP27	5	11-Jul-26	15-Jul-26		EB TSS - Low Point Sump T&C CP27	
<b>12 Projectwide Installation by Others (TCSS/MNO/FNO)</b>		244	15-Mar-26 A	13-Nov-26			
<b>TCSS Tunnel Installation</b>		197	01-May-26	13-Nov-26			
TCSS1010	Temporary Power provide by BTP for TCSS	0		01-Jun-26*	◆ Temporary Power provide by BTP for TCSS		
<b>EB - TCSS Installation</b>		144	23-Jun-26	13-Nov-26			
TCSS1020	EB - Window for Final TCSS Installation (before T2 Opening)	144	23-Jun-26	13-Nov-26			
<b>Radio System Installation</b>		117	01-May-26	25-Aug-26			
TCSS1040	TCSS Installation concurrent with E&M installation (Radio System)	117	01-May-26	25-Aug-26			
<b>FNO (Fixed Network Operator)</b>		162	01-Apr-26 A	09-Sep-26			
FNO1030	FNO Cable Containment Installation at WVB	59	01-Apr-26 A	29-May-26	FNO Cable Containment Installation at WVB		
FNO1000	FNO Cable Containment Installation at EVB	29	30-May-26	27-Jun-26		FNO Cable Containment Installation at EVB	
FNO1040	FNO Cable Laying at WVB	29	30-May-26	27-Jun-26		FNO Cable Laying at WVB	
FNO1010	FNO Cable Containment Installation at WB	29	28-Jun-26	26-Jul-26		FNO Cable Containment Installation at WB	
FNO1050	FNO Cable Laying at EVB	29	28-Jun-26	26-Jul-26		FNO Cable Laying at EVB	
FNO1020	FNO Cable Containment Installation at EB	29	27-Jul-26	24-Aug-26		FNO Cable Containment Installation at EB	
FNO1060	FNO Cable Laying at WB & EB	45	27-Jul-26	09-Sep-26		FNO Cable Laying at WB & EB	
<b>MNO (Mobile Network Operator)</b>		165	15-Mar-26 A	26-Aug-26			

- ◆ ◆ Milestones
- ▬ Planned Bar
- ▬ Actual Bar

ED/2018/04 Trunk Road T2 and Infrastructure Works  
for Developments at South Apron  
Three Months Rolling Programme (May26-Jul26)



Date	Revision	Checked	Approved

Activity ID	Activity Name	Dur	Start	Finish	2026		
					May	Jun	Jul
MNO1000	MNO - WB & EB Cable Containment Installation + Cable Pulling W	105	15-Mar-26 A	27-Jun-26	MNO - WB & EB Cable Containment Installation + Cable Pulling WVB-CP19		
MNO1010	MNO - WB & EB Cable Containment Installation + Cable Pulling at	30	28-Jun-26	27-Jul-26	MNO		
MNO1020	MNO - WB & EB Cable Containment Installation + Cable Pulling at	30	28-Jul-26	26-Aug-26			
<b>13 Projectwide Final Works (Cladding &amp; Pavement)</b>		192	13-Feb-26 A	23-Aug-26			
<b>Cladding</b>		187	13-Feb-26 A	18-Aug-26			
<b>Eastbound</b>		106	24-Apr-26 A	07-Aug-26			
<b>Typical Subframe &amp; Cladding</b>		106	24-Apr-26 A	07-Aug-26			
<b>EB CPS (include Niche)</b>		94	01-May-26	02-Aug-26			
VE10811	VE Panel - EB SUS (CPS) to CP8 Remaining	20	01-May-26	20-May-26	VE Panel - EB SUS (CPS) to CP8 Remaining		
VE10300	VE Panel - EB TSS CP16-20 (CPS)	20	25-May-26	13-Jun-26	VE Panel - EB TSS CP16-20 (CPS)		
VE10781	VE Panel - EB TSS CP20-28 (CPS)	36	28-Jun-26	02-Aug-26			
<b>EB NCPS (include Niche)</b>		106	24-Apr-26 A	07-Aug-26			
VE10581	VE Panel - EB SUS to CP8 (NCPS)	55	24-Apr-26 A	17-Jun-26	VE Panel - EB SUS to CP8 (NCPS)		
VE10611	VE Panel - EB TSS CP16-20 (NCPS)	17	18-Jun-26	04-Jul-26	VE Panel - EB TSS CP16-20 (NCPS)		
VE10791	VE Panel - EB TSS CP20-28 (NCPS)	34	05-Jul-26	07-Aug-26			
<b>Westbound</b>		187	13-Feb-26 A	18-Aug-26			
<b>Typical Subframe &amp; Cladding</b>		187	13-Feb-26 A	18-Aug-26			
<b>WB CPS (include Niche)</b>		174	13-Feb-26 A	05-Aug-26			
VE10080	VE Panel - WB TSS CP16-20 (CPS)	112	13-Feb-26 A	04-Jun-26	VE Panel - WB TSS CP16-20 (CPS)		
VE10471	VE Panel - WB TSS CP20-24 (CPS)	26	05-Jun-26	30-Jun-26	VE Panel - WB TSS CP20-24 (CPS)		
VE10180	VE Panel - WB TSS CP24-EVB (CPS)	26	01-Jul-26	26-Jul-26	VE Panel		
VE10022	VE Panel - WB SUS to CP7 (CPS) Remaining	10	27-Jul-26	05-Aug-26			
<b>WB NCPS (include Niche)</b>		147	25-Mar-26 A	18-Aug-26			
VE10711	VE Panel - WB SUS to CP8 (NCPS)	107	25-Mar-26 A	09-Jul-26	VE Panel - WB SUS to CP8 (NCPS)		
VE10731	VE Panel - WB TSS CP20-24 (NCPS)	20	10-Jul-26*	29-Jul-26			
VE10771	VE Panel - WB TSS CP24-EVB (NCPS)	20	30-Jul-26	18-Aug-26			
<b>Pavement</b>		133	13-Apr-26 A	23-Aug-26			
<b>Westbound (SUS to CKL)</b>		91	08-May-26	06-Aug-26			
PAV10020	Pavement - WB Initial Layers TSS CP16 to CP25	9	08-May-26*	16-May-26	Pavement - WB Initial Layers TSS CP16 to CP25		
PAV40030	Pavement - WB Initial Layers TSS CP31 - EVB	2	17-May-26*	18-May-26	Pavement - WB Initial Layers TSS CP31 - EVB		
PAV10000	Pavement - WB Initial Layers SUS to LSCC	4	19-May-26	22-May-26	Pavement - WB Initial Layers SUS to LSCC		
PAV40020	Pavement - WB Initial Layers TSS CP25 to 31	9	08-Jun-26*	16-Jun-26	Pavement - WB Initial Layers TSS CP25 to 31		
PAV10010B	Pavement - WB Top Layers SUS to CKL	30	08-Jul-26	06-Aug-26			
<b>Eastbound (SUS to CKL)</b>		56	12-Jun-26	06-Aug-26			
PAV10050	Pavement - EB Initial Layers TSS LSCC/CP7 to CP16	9	12-Jun-26	20-Jun-26	Pavement - EB Initial Layers TSS LSCC/CP7 to CP16		
PAV10040	Pavement - EB Initial Layers SUS to LSCC	7	21-Jun-26	27-Jun-26	Pavement - EB Initial Layers SUS to LSCC		
PAV40040	Pavement - EB Initial Layers TSS EVB to CP16 (include Branch Ti	11	27-Jun-26*	07-Jul-26	Pavement - EB Initial Layers TSS EVB to CP16 (include		
PAV10040B	Pavement - EB Top Layers SUS to CKL (include Branch Tunnel, S	30	08-Jul-26	06-Aug-26			
<b>AGR &amp; DPR</b>		4	21-Jul-26	24-Jul-26			
PAV20000	Pavement - DPR Initial Layers	2	21-Jul-26	22-Jul-26	Pavement - DPR		
PAV20010	Pavement - AGR/DPRT Top Layers	2	23-Jul-26	24-Jul-26	Pavement - A		
<b>TKOLTT Interchange (Top Layer Only)</b>		42	13-Apr-26 A	24-May-26			
PAV30000	Pavement - TKOLTT Interchange Top Layer	42	13-Apr-26 A	24-May-26	Pavement - TKOLTT Interchange Top Layer		
<b>Road Marking</b>		30	25-Jul-26	23-Aug-26			
PAV40000	Pavement - Final Road Marking for All Areas	30	25-Jul-26	23-Aug-26			
<b>14 Projectwide Testing and Commissioning</b>		202	09-Feb-26 A	29-Aug-26			
<b>FS Water</b>		90	01-Jun-26	29-Aug-26			
FSW00	FS Water - Final FS Water Pipe Connection (after last parapet ava	9	01-Jun-26	09-Jun-26	FS Water - Final FS Water Pipe Connection (after last parapet available)		
TE210	EB TSS - Window for Final (FS Water) MiMEP Connection & Contr	25	05-Jun-26	29-Jun-26	EB TSS - Window for Final (FS Water) MiMEP Connection & Connection to		
FSW10	FS Water - WWO 46 - Part IV Submission	0		30-Jun-26*	FS Water - WWO 46 - Part IV Submission		
FSW20	FS Water - WSD Pipeline Inspection	60	01-Jul-26	29-Aug-26			

- ◆ Milestones
- Planned Bar
- Actual Bar

ED/2018/04 Trunk Road T2 and Infrastructure Works  
for Developments at South Apron  
Three Months Rolling Programme (May26-Jul26)



Date	Revision	Checked	Approved

Activity ID	Activity Name	Dur	Start	Finish	2026		
					May	Jun	Jul
<b>Early E&amp;M T&amp;C (Level 1-Level 2 Testing)</b>		147	09-Feb-26 A	05-Jul-26			
<b>Westbound (Unfinished scope to be continue in Final T&amp;C)</b>		147	09-Feb-26 A	05-Jul-26			
ETC1000	WB- Tunnel Damper Function Test	147	09-Feb-26 A	05-Jul-26	WB- Tunnel Damper Function Test		
ETC1010	WB- Tunnel Lighting Functional Test	131	25-Feb-26 A	05-Jul-26	WB- Tunnel Lighting Functional Test		
ETC1020	WB- Cable Insulation Test	128	28-Feb-26 A	05-Jul-26	WB- Cable Insulation Test		
ETC1040	WB- AFA System Functional Test	88	09-Apr-26 A	05-Jul-26	WB- AFA System Functional Test		
ETC1050	WB- AQMS/CMCS Point to Point Test	69	28-Apr-26 A	05-Jul-26	WB- AQMS/CMCS Point to Point Test		
ETC1100	WB- Fire Hydrant Pump Functional Test	15	15-Jun-26*	29-Jun-26	WB- Fire Hydrant Pump Functional Test		
<b>Eastbound (Unfinished scope to be continue in Final T&amp;C)</b>		128	28-Feb-26 A	05-Jul-26			
ETC1030	EB- Tunnel Damper Function Test	128	28-Feb-26 A	05-Jul-26	EB- Tunnel Damper Function Test		
ETC1060	EB- Tunnel Lighting Functional Test	65	02-May-26*	05-Jul-26	EB- Tunnel Lighting Functional Test		
ETC1070	EB- AQMS/CMCS Point to Point Test	60	07-May-26*	05-Jul-26	EB- AQMS/CMCS Point to Point Test		
ETC1080	EB- AFA System Functional Test	58	09-May-26*	05-Jul-26	EB- AFA System Functional Test		
ETC1090	EB- Cable Insulation Test	37	30-May-26*	05-Jul-26	EB- Cable Insulation Test		
<b>Final E&amp;M/VAC T&amp;C (Level 1-3 Testing)</b>		87	01-Jun-26	26-Aug-26			
FTC1000	WB - Service Gallery MiMEP T&C	21	01-Jun-26	21-Jun-26	WB - Service Gallery MiMEP T&C		
FTC1050	TBM Tunnel - Tunnel Air Flow Measurement	52	06-Jul-26	26-Aug-26			
FTC1040	TBM Tunnel - FS AFA and FS Water System Test	52	06-Jul-26*	26-Aug-26			
FTC1010	EB - Service Gallery MiMEP T&C	41	16-Jul-26	25-Aug-26			
<b>15 Projectwide Statutory Inspection and Handover</b>		0	19-Jul-26	19-Jul-26			
<b>Incentive Payment Milestones</b>		0	19-Jul-26	19-Jul-26			
IPM0021	M3 - Seawall Reinstatement Area ready for handover to VTC & EB	0		19-Jul-26*			◆ M3 - Seawall Reinstatement
<b>Infrastructure Works</b>		106	30-Apr-26 A	14-Aug-26			
<b>10 Lam Chak Street / Kai Hing Road Modification</b>		106	30-Apr-26 A	14-Aug-26			
<b>LCS/KHR Modification (KD-19)</b>		106	30-Apr-26 A	14-Aug-26			
<b>Stage 2 Works - New Roundabout</b>		106	30-Apr-26 A	14-Aug-26			
LCS10028	LCS/KHR - Advanced Drainage Construction	62	30-Apr-26 A	01-Jul-26	LCS/KHR - Advanced Drainage Construction		
LCS10020	LCS / KHR - Site Formation	16	02-Jul-26	17-Jul-26	LCS / KHR - Site Formation		
LCS10025	LCS / KHR - Drainage	28	18-Jul-26	14-Aug-26			

- ◆ Milestones
- Planned Bar
- Actual Bar

ED/2018/04 Trunk Road T2 and Infrastructure Works  
for Developments at South Apron  
Three Months Rolling Programme (May26-Jul26)



Date	Revision	Checked	Approved

Activity ID	Activity Name	Dur	Start	Finish	2026		
					Jun	Jul	Aug
<b>HKT2 "Mid Oct26" Revised Accelerated Programme DD 31M</b>							
<b>Construction</b>							
<b>Trunk Road T2</b>							
<b>01 West Ventilation Building - WVB</b>							
<b>WVB - Remaining works after FSI</b>							
<b>External Works</b>							
WVB1950	WVB - Fence Wall (KFR Side)	103	02-Mar-26 A	13-Jun-26	WVB - Fence Wall (KFR Side)		
WVB1960	WVB - Gate Design Confirmation	0		31-May-26*	WVB - Gate Design Confirmation		
WVB1970	WVB - Gate Installation	50	01-Jun-26	20-Jul-26	WVB - Gate Installation		
<b>Final works</b>							
WVB1980	WVB - Road Side Kerb and Channel (EVA side)	61	20-Apr-26 A	20-Jun-26	WVB - Road Side Kerb and Channel (EVA side)		
WVB1990	WVB - Road Side Kerb and Channel (KFR side)	30	01-Jun-26 A	30-Jun-26	WVB - Road Side Kerb and Channel (KFR side)		
WVB1880	WVB - Backfilling and Subbase	13	08-Jun-26*	20-Jun-26	WVB - Backfilling and Subbase		
WVB1860	WVB - Flexible Pavement	8	21-Jun-26	28-Jun-26	WVB - Flexible Pavement		
WVB1930	WVB - Handover with HyD	20	29-Jun-26	18-Jul-26	WVB - Handover with HyD		
WVB2000	WVB - Remaining Soft Landscape	31	01-Jul-26	31-Jul-26	WVB - Remaining Soft Landscape		
WVB1901	KD-29 - Completion of Section 9G - Remaining Landscape	0		31-Jul-26*	◆ KD-29 - Completion of Section 9G - Remaining Landscape		
<b>02 At-Grade Road - AGR</b>							
<b>Kiosk</b>							
AGR1110	Kiosk - Reday for FSI	6	01-Jun-26	06-Jun-26	Kiosk - Reday for FSI		
<b>AGR - Road &amp; Drainage works</b>							
AGR1150	AGR - Remaining Barrier (after ramp demobilisation)	6	02-Jul-26	07-Jul-26	AGR - Remaining Barrier (after ramp demobilisation)		
<b>AGR - Road Lighting</b>							
AGR1160	AGR & DPR - Road Lighting Installation	30	08-Jul-26	06-Aug-26	AGR & DPR - Road Lighting Installation		
<b>Temporary Ramp for CKR Opening</b>							
A229450400	DPR - WB Temp. Ramp demolition (after last usage of MSV)	24	08-Jun-26	01-Jul-26	DPR - WB Temp. Ramp demolition (after last usage of MSV)		
<b>03 Depressed Road - DPR</b>							
<b>DPR - Road Works</b>							
<b>Rising Main</b>							
A229450390	DPR - Civil - Pillar Box	49	13-Apr-26 A	01-Jun-26	DPR - Civil - Pillar Box		
A229450410	DPR - Civil - Central Divider	30	01-Jun-26	30-Jun-26	DPR - Civil - Central Divider		
<b>Movement Joint and Cut-off Drain</b>							
A229451140	DPR - MJ & Cut-off Drain Westbound batch 1	108	01-Mar-26 A	16-Jun-26	DPR - MJ & Cut-off Drain Westbound batch 1		
A229451160	DPR - MJ & Cut-off Drain Eastbound batch 1	79	13-Apr-26 A	30-Jun-26	DPR - MJ & Cut-off Drain Eastbound batch 1		
A229451150	DPR - MJ & Cut-off Drain Westbound batch 2	28	17-Jun-26	14-Jul-26	DPR - MJ & Cut-off Drain Westbound batch 2		
A229451170	DPR - MJ & Cut-off Drain Eastbound batch 2	31	01-Jul-26	31-Jul-26	DPR - MJ & Cut-off Drain Eastbound batch 2		
<b>06 Launching Shaft &amp; C&amp;C Tunnel - LSCC</b>							
<b>LSCC - Structure works</b>							
<b>Launching Shaft</b>							
<b>LS - Miscellaneous Structural Openings</b>							
<b>WB NCP wall box out structure (subject to temporary cable relocation, TBM BT 8)</b>							
LSCC10461	LSCC - WB NCP remaining internal structure work	14	01-Jun-26	14-Jun-26	LSCC - WB NCP remaining internal structure work		
<b>LSCC - Backfilling &amp; Dwall Dismantling</b>							
LSCC1000	Demolition of Strutting Beams, C&C Bulkhead Wall	204	01-Dec-25 A	22-Jun-26	Demolition of Strutting Beams, C&C Bulkhead Wall		
<b>07 Tunnel Sub-sea (TSS)</b>							
<b>TSS - TBM Excavation from Kai Tak</b>							
<b>Eastbound - TBM S1282</b>							
<b>TBM2 Rescue</b>							
<b>Seawall Reinstatement</b>							
A229451020	Phase 5 (Bay 4 to Bay 5) Seawall Reinstatement	218	18-Dec-25 A	23-Jul-26	Phase 5 (Bay 4 to Bay 5) Seawall Reinstatement		

- ◆ Milestones
- Planned Bar
- Actual Bar

ED/2018/04 Trunk Road T2 and Infrastructure Works  
for Developments at South Apron  
Three Months Rolling Programme (Jun26-Aug26)



Date	Revision	Checked	Approved

Activity ID	Activity Name	Dur	Start	Finish	2026		
					Jun	Jul	Aug
A229450970	Phase 3 (Bay 6 to Bay 8) Seawall Reinstatement	136	16-Jan-26 A	01-Jun-26	Phase 3 (Bay 6 to Bay 8) Seawall Reinstatement		
A229451010	Phase 4 (Bay 1 to Bay 3) Seawall Reinstatement	158	16-Feb-26 A	23-Jul-26	Phase 4 (Bay 1 to Bay 3) Seawall Reinstatement		
A229451040	Target Handover to VTC	0		19-Jul-26*	◆ Target Handover to VTC		
<b>TSS - Tunnel Civil Works</b>		88	03-Apr-26 A	29-Jun-26			
<b>Westbound (WB)</b>		85	03-Apr-26 A	26-Jun-26			
<b>WB TSS - Below Road Level Installation</b>		85	03-Apr-26 A	26-Jun-26			
<b>Low Point @ CP27</b>		85	03-Apr-26 A	26-Jun-26			
TC1450	WB TBM Tunnel - Low Point Sump Pit waterproofing & testing	85	03-Apr-26 A	26-Jun-26	WB TBM Tunnel - Low Point Sump Pit waterproofing & testing		
<b>Eastbound (EB)</b>		72	19-Apr-26 A	29-Jun-26			
<b>EB TSS - Civil Works After TBM2 Dismantled</b>		40	21-May-26 A	29-Jun-26			
<b>EB TSS - Fire Board - Road level with deletion up to Ch8850</b>		30	21-May-26 A	20-Jun-26			
TC450	EB TSS - Fire Board - Walls & OHVD Soffit up to CP27	12	21-May-26 A	01-Jun-26	EB TSS - Fire Board - Walls & OHVD Soffit up to CP27		
TC460	EB TSS - Fire Board - Walls & OHVD Soffit up to CP28	11	23-May-26 A	03-Jun-26	EB TSS - Fire Board - Walls & OHVD Soffit up to CP28		
TC11740	EB TSS - HyD inspection before black paint & E&M bracket CP25	7	01-Jun-26	07-Jun-26	EB TSS - HyD inspection before black paint & E&M bracket CP25 to CP26		
TC470	EB TSS - Fire Board - Walls & OHVD Soffit from CP28 to R1005	9	03-Jun-26	12-Jun-26	EB TSS - Fire Board - Walls & OHVD Soffit from CP28 to R1005		
TC11710	EB TSS - HyD inspection before black paint & E&M bracket CP26	7	08-Jun-26	14-Jun-26	EB TSS - HyD inspection before black paint & E&M bracket CP26 to CP27		
TC480	EB TSS - Fire Board - Gantry dismantling at CKL	8	12-Jun-26	20-Jun-26	EB TSS - Fire Board - Gantry dismantling at CKL		
<b>EB TSS - E&amp;M Brackets &amp; Final TCSS Civil Provision</b>		38	23-May-26 A	29-Jun-26			
TC660	EB TSS - E&M Brackets CP26 to CP27 (R930)	19	23-May-26 A	10-Jun-26	EB TSS - E&M Brackets CP26 to CP27 (R930)		
TC670	EB - TBM Tunnel - E&M Bracket CP27 to CP28	16	29-May-26 A	13-Jun-26	EB - TBM Tunnel - E&M Bracket CP27 to CP28		
TC690	EB - TBM Tunnel - E&M Bracket CP28 to CP29	25	29-May-26 A	22-Jun-26	EB - TBM Tunnel - E&M Bracket CP28 to CP29		
TC710	EB - TBM Tunnel - TCSS Final Civil provision at OHVD soffit	7	22-Jun-26	29-Jun-26	EB - TBM Tunnel - TCSS Final Civil provision at OHVD soffit		
<b>EB TSS - Black paint</b>		14	15-Jun-26	28-Jun-26			
TC720	EB - TBM Tunnel - Black paint CP25 to CP27	7	15-Jun-26	21-Jun-26	EB - TBM Tunnel - Black paint CP25 to CP27		
TC730	EB - TBM Tunnel - Black paint from CP27 up to end wall	7	22-Jun-26	28-Jun-26	EB - TBM Tunnel - Black paint from CP27 up to end wall		
<b>EB TSS - Below Road Level Installation</b>		69	19-Apr-26 A	26-Jun-26			
<b>Low Point Sump Pit</b>		69	19-Apr-26 A	26-Jun-26			
<b>CP27</b>		69	19-Apr-26 A	26-Jun-26			
TC700	EB TSS - Low Point Sump Pit waterproofing & testing	69	19-Apr-26 A	26-Jun-26	EB TSS - Low Point Sump Pit waterproofing & testing		
<b>08 CKL Tunnel &amp; End Wall Transition</b>		53	27-Apr-26 A	18-Jun-26			
<b>Eastbound (EB)</b>		53	27-Apr-26 A	18-Jun-26			
<b>EB CKL - After TBM breakthrough</b>		53	27-Apr-26 A	18-Jun-26			
<b>EB Remaining Civil Works Summary</b>		48	27-Apr-26 A	13-Jun-26			
TA1371	Summary - EB Remaining Civil Work (TB1000 to TC11690)	48	27-Apr-26 A	13-Jun-26	Summary - EB Remaining Civil Work (TB1000 to TC11690)		
<b>Eastbound (EB) Final Civil Works</b>		25	25-May-26 A	18-Jun-26			
<b>End Wall Civil &amp; Structure Works</b>		12	25-May-26 A	05-Jun-26 A			
TB1390	EB - End Wall Crown Falsework/Formwork Erection	7	25-May-26 A	31-May-26 A	EB - End Wall Crown Falsework/Formwork Erection		
TB1400	EB - End Wall Crown Concreting & Falsework Dismantling	2	01-Jun-26 A	03-Jun-26 A	EB - End Wall Crown Concreting & Falsework Dismantling		
TB1160	EB- TSS/CKL End Wall E&M Bracket (CP29-EW)	1	04-Jun-26 A	05-Jun-26 A	EB- TSS/CKL End Wall E&M Bracket (CP29-EW)		
<b>E&amp;M Brackets &amp; Black paint</b>		12	27-May-26 A	07-Jun-26			
TB1370	EB - Type A Dr&Br - Remaining Bracket	12	27-May-26 A	07-Jun-26	EB - Type A Dr&Br - Remaining Bracket		
<b>EB TSS Final OHVDs</b>		18	01-Jun-26	18-Jun-26			
TC400	EB TSS - OHVD Lifting Batch 1-3 (16 pcs)	7	01-Jun-26	07-Jun-26	EB TSS - OHVD Lifting Batch 1-3 (16 pcs)		
TC11690	EB TSS - Final Cast in-situ OHVD (5 pcs)	6	08-Jun-26	13-Jun-26	EB TSS - Final Cast in-situ OHVD (5 pcs)		
TC11700	Tunnel - Provision for Cleaning	5	14-Jun-26	18-Jun-26	Tunnel - Provision for Cleaning		
TC11750	EB TSS - OHVD Formwork Dismantling	4	14-Jun-26	17-Jun-26	EB TSS - OHVD Formwork Dismantling		
<b>EB CKL - TCSS Civil Provision</b>		5	27-May-26 A	31-May-26 A			
TB1210	EB - Type A Dr&Br - Remaining TCSS Civil Provision	5	27-May-26 A	31-May-26 A	EB - Type A Dr&Br - Remaining TCSS Civil Provision		
<b>09 Cross Passages</b>		24	01-Jun-26	24-Jun-26			
<b>Cross Passages @ TSS &amp; CKL Tunnel (CP7 to CP33)</b>		24	01-Jun-26	24-Jun-26			
<b>CP26 by Mini TBM</b>		14	01-Jun-26	14-Jun-26			

- ◆ Milestones
- █ Planned Bar
- █ Actual Bar

ED/2018/04 Trunk Road T2 and Infrastructure Works  
for Developments at South Apron  
Three Months Rolling Programme (Jun26-Aug26)



Date	Revision	Checked	Approved

Activity ID	Activity Name	Dur	Start	Finish	2026		
					Jun	Jul	Aug
A8300	CP26 - E&M Installation	14	01-Jun-26	14-Jun-26	CP26 - E&M Installation		
<b>CP27 by Mini TBM</b>		23	02-Jun-26	24-Jun-26			
A8360	CP27 - EB Tympanum Remaining Civil Work (Parapet, Fireboard,	9	02-Jun-26	10-Jun-26	CP27 - EB Tympanum Remaining Civil Work (Parapet, Fireboard, Black Paint & E&M Brackets)		
A8310	CP27 - E&M Installation	14	11-Jun-26	24-Jun-26	CP27 - E&M Installation		
<b>CP28 by D&amp;Br</b>		23	01-Jun-26	23-Jun-26			
TD1340	CP28 - EB Remaining Civil Work at Special Segment (Fireboard, E	9	01-Jun-26	09-Jun-26	CP28 - EB Remaining Civil Work at Special Segment (Fireboard, Black Paint & E&M Brackets) (subj. to CP28 Crown FB)		
TD1300	CP28 - E&M Installation	14	10-Jun-26	23-Jun-26	CP28 - E&M Installation		
<b>CP29 by D&amp;Br</b>		17	01-Jun-26	17-Jun-26			
TD1470	CP29 - EB Remaining Civil Work at Special Segment (Black Paint	3	01-Jun-26	03-Jun-26	CP29 - EB Remaining Civil Work at Special Segment (Black Paint & E&M Brackets)		
TD1390	CP29 - E&M Installation	14	04-Jun-26	17-Jun-26	CP29 - E&M Installation		
<b>10 East Ventilation Building - EVB</b>		92	01-Jun-26	31-Aug-26			
<b>VO - Recovery Vehicle Base (RVB) Construction</b>		92	01-Jun-26	31-Aug-26			
EVB1715	RVB - Structural Works and Canopy	40	01-Jun-26	10-Jul-26	RVB - Structural Works and Canopy		
EVB1630	RVB - Drainage works	21	11-Jul-26	31-Jul-26	RVB - Drainage works		
EVB1695	RVB - Paving works	31	01-Aug-26	31-Aug-26			
<b>11 Tunnel E&amp;M Installation</b>		109	29-Mar-26 A	15-Jul-26			
<b>Key Handover Date to E&amp;M Team</b>		29	31-May-26	29-Jun-26			
TC760	EB - Full Access for MIMEP connection after MIMEP installation	0		31-May-26	EB - Full Access for MIMEP connection after MIMEP installation		
TC780	EB - Full Access for TVS/Damper Installation (After Final Cleaning)	0		18-Jun-26	◆ EB - Full Access for TVS/Damper Installation (After Final Cleaning)		
TC740	EB - Full Access for LV Cable Installation (After Formwork Dism.)	0		22-Jun-26	◆ EB - Full Access for LV Cable Installation (After Formwork Dism.)		
TC750	EB - Full Access for Tunnel Lighting (After Black Paint)	0		28-Jun-26	◆ EB - Full Access for Tunnel Lighting (After Black Paint)		
TC11820	EB - Full Access for TCSS Installation (After TCSS Civil Provision)	0		29-Jun-26	◆ EB - Full Access for TCSS Installation (After TCSS Civil Provision)		
<b>WB - E&amp;M Works</b>		94	29-Mar-26 A	30-Jun-26			
<b>WB - HV Cabling &amp; HV Power On</b>		12	01-Jun-26	12-Jun-26			
TE1220	WB Tunnel - Final HV Power On Change Over	12	01-Jun-26	12-Jun-26	WB Tunnel - Final HV Power On Change Over		
<b>WB - LV Cabling &amp; LV Power On</b>		84	08-Apr-26 A	30-Jun-26			
E&MC1200	WB TSS - CP24-EVB E&M installation (Final Stage subject to Last	67	08-Apr-26 A	13-Jun-26	WB TSS - CP24-EVB E&M installation (Final Stage subject to Last Bracket available)		
E&MC1190	WB SUS to CP2 - E&M Installation (Final Stage)	30	01-Jun-26	30-Jun-26	WB SUS to CP2 - E&M Installation (Final Stage)		
<b>WB - Below Road Level E&amp;M Installation</b>		82	29-Mar-26 A	18-Jun-26			
<b>MIMEP</b>		82	29-Mar-26 A	18-Jun-26			
TF070	WB TSS - Service Gallery E&M Installation	82	29-Mar-26 A	18-Jun-26	WB TSS - Service Gallery E&M Installation		
<b>EB - E&amp;M Works</b>		45	01-Jun-26	15-Jul-26			
<b>EB - HV Cabling &amp; HV Power On</b>		11	01-Jun-26	11-Jun-26			
TE1190	EB Tunnel - Permanent HV Cable laying (Final Section)	8	01-Jun-26	08-Jun-26	EB Tunnel - Permanent HV Cable laying (Final Section)		
TE230	EB Tunnel - Final HV Power On Change Over	3	09-Jun-26	11-Jun-26	EB Tunnel - Final HV Power On Change Over		
<b>EB - LV Cabling &amp; LV Power On</b>		35	01-Jun-26	05-Jul-26			
E&MC1100	EB TSS - CP16-20 E&M installation	35	01-Jun-26	05-Jul-26	EB TSS - CP16-20 E&M installation		
E&MC1120	EB TSS - CP20-28 - E&M installation	25	10-Jun-26	04-Jul-26	EB TSS - CP20-28 - E&M installation		
E&MC2100	EB TSS - E&M Installation CP28 to EVB for VAC T&C (Final Stag	5	22-Jun-26	27-Jun-26	EB TSS - E&M Installation CP28 to EVB for VAC T&C (Final Stage subject to last OHVD)		
<b>EB - Below Road Level E&amp;M Installation</b>		45	01-Jun-26	15-Jul-26			
<b>MIMEP</b>		30	01-Jun-26	30-Jun-26			
TE1230	EB TSS - Window for Final (LV Cable) MIMEP Connection & Conn	30	01-Jun-26	30-Jun-26	EB TSS - Window for Final (LV Cable) MIMEP Connection & Connection to CKL		
<b>FS Room</b>		28	01-Jun-26	28-Jun-26			
TC150	EB TBM Tunnel - FS Control Room E&M Installation	28	01-Jun-26	28-Jun-26	EB TBM Tunnel - FS Control Room E&M Installation		
<b>Low Point Sump</b>		19	27-Jun-26	15-Jul-26			
TE190	EB TSS - Low Point Sump installation CP27	14	27-Jun-26	10-Jul-26	EB TSS - Low Point Sump installation CP27		
TE250	EB TSS - Low Point Sump T&C CP27	5	11-Jul-26	15-Jul-26	EB TSS - Low Point Sump T&C CP27		
<b>12 Projectwide Installation by Others (TCSS/MNO/FNO)</b>		245	15-Mar-26 A	14-Nov-26			
<b>TCSS Tunnel Installation</b>		167	01-Jun-26	14-Nov-26			
<b>EB - TCSS Installation</b>		145	22-Jun-26	14-Nov-26			
TCSS1020	EB - Window for Final TCSS Installation (before T2 Opening)	145	22-Jun-26	14-Nov-26			

- ◆ ◆ Milestones
- █ Planned Bar
- █ Actual Bar

ED/2018/04 Trunk Road T2 and Infrastructure Works  
for Developments at South Apron  
Three Months Rolling Programme (Jun26-Aug26)



Date	Revision	Checked	Approved

Activity ID	Activity Name	Dur	Start	Finish	2026		
					Jun	Jul	Aug
<b>Radio System Installation</b>							
TCSS1040	TCSS Installation concurrent with E&M installation (Radio System)	86	01-Jun-26	25-Aug-26	[Planned Bar]		
TCSS1050	Radio System Ready before BTP T2 FSI	0		25-Aug-26*			TCSS Inst ◆ Radio Syst
<b>FNO (Fixed Network Operator)</b>							
FNO1000	FNO Cable Containment Installation at EVB	31	30-May-26 A	29-Jun-26	[Planned Bar]		
FNO1040	FNO Cable Laying at WVB	29	01-Jun-26	29-Jun-26	[Planned Bar]		
FNO1010	FNO Cable Containment Installation at WB	29	30-Jun-26	28-Jul-26		[Planned Bar]	
FNO1050	FNO Cable Laying at EVB	29	30-Jun-26	28-Jul-26		[Planned Bar]	
FNO1020	FNO Cable Containment Installation at EB	29	29-Jul-26	26-Aug-26		[Planned Bar]	
FNO1060	FNO Cable Laying at WB & EB	45	29-Jul-26	11-Sep-26		[Planned Bar]	
<b>MNO (Mobile Network Operator)</b>							
MNO1000	MNO - WB & EB Cable Containment Installation + Cable Pulling W	136	15-Mar-26 A	28-Jul-26	[Planned Bar]		
MNO1010	MNO - WB & EB Cable Containment Installation + Cable Pulling at	30	29-Jul-26	27-Aug-26		[Planned Bar]	
MNO1020	MNO - WB & EB Cable Containment Installation + Cable Pulling at	30	28-Aug-26	26-Sep-26		[Planned Bar]	
<b>13 Projectwide Final Works (Cladding &amp; Pavement)</b>							
<b>Cladding</b>							
<b>Eastbound</b>							
<b>Typical Subframe &amp; Cladding</b>							
<b>EB CPS (include Niche)</b>							
VE10811	VE Panel - EB SUS (CPS) to CP8 Remaining	46	16-May-26 A	30-Jun-26	[Planned Bar]		
VE10781	VE Panel - EB TSS CP20-28 (CPS)	34	06-Jul-26	08-Aug-26		[Planned Bar]	
VE10120	VE Panel - EB TSS CP28 to EVB (CPS)	11	09-Aug-26	19-Aug-26		[Planned Bar]	
<b>EB NCPS (include Niche)</b>							
VE10581	VE Panel - EB SUS to CP8 (NCPS)	67	24-Apr-26 A	29-Jun-26	[Planned Bar]		
VE10611	VE Panel - EB TSS CP16-20 (NCPS)	17	06-Jul-26	22-Jul-26		[Planned Bar]	
VE10791	VE Panel - EB TSS CP20-28 (NCPS)	24	23-Jul-26	15-Aug-26		[Planned Bar]	
VE10631	VE Panel - EB TSS CP28 to EVB (NCPS)	11	16-Aug-26	26-Aug-26		[Planned Bar]	
<b>Westbound</b>							
<b>Typical Subframe &amp; Cladding</b>							
<b>WB CPS (include Niche)</b>							
VE10022	VE Panel - WB SUS to CP7 (CPS) Remaining	111	08-Apr-26 A	27-Jul-26	[Planned Bar]		
VE10471	VE Panel - WB TSS CP20-24 (CPS)	52	06-May-26 A	26-Jun-26		[Planned Bar]	
VE10180	VE Panel - WB TSS CP24-EVB (CPS)	61	27-Jun-26	26-Aug-26		[Planned Bar]	
<b>WB NCPS (include Niche)</b>							
VE10711	VE Panel - WB SUS to CP8 (NCPS)	99	25-Mar-26 A	01-Jul-26	[Planned Bar]		
VE10731	VE Panel - WB TSS CP20-24 (NCPS)	80	13-May-26 A	31-Jul-26		[Planned Bar]	
VE10771	VE Panel - WB TSS CP24-EVB (NCPS)	26	01-Aug-26	26-Aug-26		[Planned Bar]	
<b>Pavement</b>							
<b>Westbound (SUS to CKL)</b>							
PAV40020	Pavement - WB Initial Layers TSS CP25 to 31	21	20-May-26 A	09-Jun-26	[Planned Bar]		
PAV10000	Pavement - WB Initial Layers SUS to LSCC	4	01-Jun-26	04-Jun-26	[Planned Bar]		
PAV10010B	Pavement - WB Top Layers SUS to CKL	30	08-Jul-26	06-Aug-26		[Planned Bar]	
<b>Eastbound (SUS to CKL)</b>							
PAV10050	Pavement - EB Initial Layers TSS LSCC/CP7 to CP16	9	12-Jun-26	20-Jun-26		[Planned Bar]	
PAV10040	Pavement - EB Initial Layers SUS to LSCC	7	21-Jun-26	27-Jun-26		[Planned Bar]	
PAV40040	Pavement - EB Initial Layers TSS EVB to CP16 (include Branch Ti	11	27-Jun-26*	07-Jul-26		[Planned Bar]	
PAV10040B	Pavement - EB Top Layers SUS to CKL (include Branch Tunnel, S	30	08-Jul-26	06-Aug-26		[Planned Bar]	
<b>AGR &amp; DPR</b>							
PAV20000	Pavement - DPR Initial Layers	2	08-Jul-26	09-Jul-26		[Planned Bar]	
PAV20010	Pavement - AGR/DPR Top Layers	2	10-Jul-26	11-Jul-26		[Planned Bar]	
<b>TKOLTT Interchange (Top Layer Only)</b>							
		73	13-Apr-26 A	24-Jun-26		[Planned Bar]	

- ◆ ◆ Milestones
- [Green Bar] Planned Bar
- [Blue Bar] Actual Bar

ED/2018/04 Trunk Road T2 and Infrastructure Works  
for Developments at South Apron  
Three Months Rolling Programme (Jun26-Aug26)



Date	Revision	Checked	Approved

Activity ID	Activity Name	Dur	Start	Finish	2026		
					Jun	Jul	Aug
PAV30000	Pavement - TKOLTT Interchange Top Layer	73	13-Apr-26 A	24-Jun-26	Pavement - TKOLTT Interchange Top Layer		
<b>Road Marking</b>		30	12-Jul-26	10-Aug-26			
PAV40000	Pavement - Final Road Marking for All Areas	30	12-Jul-26	10-Aug-26	Pavement - Final Road Marking for All Areas		
<b>14 Projectwide Testing and Commissioning</b>		232	09-Feb-26 A	28-Sep-26			
<b>FS Water</b>		120	01-Jun-26	28-Sep-26			
TE210	EB TSS - Window for Final (FS Water) MiMEP Connection & Conn	25	01-Jun-26	25-Jun-26	EB TSS - Window for Final (FS Water) MiMEP Connection & Connection to CKL		
FSW00	FS Water - Final FS Water Pipe Connection (after last parapet ava	9	01-Jun-26	09-Jun-26	FS Water - Final FS Water Pipe Connection (after last parapet available)		
FSW10	FS Water - WWO 46 - Part IV Submission	0		30-Jun-26*	◆ FS Water - WWO 46 - Part IV Submission		
FSW20	FS Water - WSD Pipeline Inspection	60	01-Jul-26	29-Aug-26			
FSW30	FS Water - Water Sampling	30	30-Aug-26	28-Sep-26			
<b>Road Safety Audit (RSA)</b>		33	09-Aug-26	10-Sep-26			
RSA1000	RSA - Site Inspection (by MVA)	3	09-Aug-26*	11-Aug-26	RSA - Site Inspection (by MVA)		
RSA1010	RSA - Report Issurance (by MVA)	30	12-Aug-26	10-Sep-26			
<b>Early E&amp;M T&amp;C (Level 1-Level 2 Testing)</b>		147	09-Feb-26 A	05-Jul-26			
<b>Westbound (Unfinished scope to be continue in Final T&amp;C)</b>		147	09-Feb-26 A	05-Jul-26			
ETC1000	WB- Tunnel Damper Function Test	147	09-Feb-26 A	05-Jul-26*	WB- Tunnel Damper Function Test		
ETC1010	WB- Tunnel Lighting Functional Test	131	25-Feb-26 A	05-Jul-26*	WB- Tunnel Lighting Functional Test		
ETC1020	WB- Cable Insulation Test	128	28-Feb-26 A	05-Jul-26*	WB- Cable Insulation Test		
ETC1040	WB- AFA System Functional Test	88	09-Apr-26 A	05-Jul-26*	WB- AFA System Functional Test		
ETC1050	WB- AQMS/CMCS Point to Point Test	69	28-Apr-26 A	05-Jul-26*	WB- AQMS/CMCS Point to Point Test		
ETC1100	WB- Fire Hydrant Pump Functional Test	22	13-Jun-26	04-Jul-26*	WB- Fire Hydrant Pump Functional Test		
<b>Eastbound (Unfinished scope to be continue in Final T&amp;C)</b>		128	28-Feb-26 A	05-Jul-26			
ETC1030	EB- Tunnel Damper Function Test	128	28-Feb-26 A	05-Jul-26*	EB- Tunnel Damper Function Test		
ETC1060	EB- Tunnel Lighting Functional Test	65	02-May-26 A	05-Jul-26*	EB- Tunnel Lighting Functional Test		
ETC1070	EB- AQMS/CMCS Point to Point Test	60	07-May-26 A	05-Jul-26*	EB- AQMS/CMCS Point to Point Test		
ETC1080	EB- AFA System Functional Test	58	09-May-26 A	05-Jul-26*	EB- AFA System Functional Test		
ETC1090	EB- Cable Insulation Test	37	30-May-26 A	05-Jul-26*	EB- Cable Insulation Test		
<b>Final E&amp;M/VAC T&amp;C (Level 1-3 Testing)</b>		69	19-Jun-26	26-Aug-26			
FTC1000	WB - Service Gallery MiMEP T&C	21	19-Jun-26	09-Jul-26	WB - Service Gallery MiMEP T&C		
FTC1060	TBM Tunnel - Tunnel Lighting T&C	26	10-Jul-26	05-Aug-26	TBM Tunnel - Tunnel Lighting T&C		
FTC1010	EB - Service Gallery MiMEP T&C	41	16-Jul-26	25-Aug-26	EB - Service Gallery MiMEP T&C		
<b>Detailed 52d T&amp;C Programme</b>		60	27-Jun-26	26-Aug-26			
<b>EB OHVD Level Final Installation</b>		21	27-Jun-26	18-Jul-26			
DFTC1010	OHVD - Final Tunnel Lighting Installation	13	27-Jun-26	10-Jul-26	OHVD - Final Tunnel Lighting Installation		
DFTC1020	OHVD - Final Cable Termination for Lighting	21	27-Jun-26	18-Jul-26	OHVD - Final Cable Termination for Lighting		
DFTC1000	OHVD - Final Cable Termination for Damper	20	27-Jun-26	17-Jul-26	OHVD - Final Cable Termination for Damper		
<b>EB Road Level Final Installation</b>		17	27-Jun-26	14-Jul-26			
DFTC1030	Road Level CPS - Final Cable Pulling CP26 to CP29	17	27-Jun-26	14-Jul-26	Road Level CPS - Final Cable Pulling CP26 to CP29		
DFTC1060	Road Level NCPS - Final FS Niche Installation	3	27-Jun-26	30-Jun-26	Road Level NCPS - Final FS Niche Installation		
<b>EB Service Gallery Level Final Installation</b>		22	27-Jun-26	19-Jul-26			
DFTC1070	SG -Final FS System Installation	20	27-Jun-26	17-Jul-26	SG -Final FS System Installation		
DFTC1080	SG - Final Foam System Installation	5	27-Jun-26	02-Jul-26	SG - Final Foam System Installation		
DFTC1100	SG - Final E&M Zone Switches Board	15	27-Jun-26	12-Jul-26	SG - Final E&M Zone Switches Board		
DFTC1110	SG - Final Cable Termination	22	27-Jun-26	19-Jul-26	SG - Final Cable Termination		
<b>Projectwise Testing</b>		60	27-Jun-26	26-Aug-26			
DFTC1040	Road Level CPS - Final Cable Level 1& 2 Testing (Insulation Test)	20	27-Jun-26	17-Jul-26	Road Level CPS - Final Cable Level 1& 2 Testing (Insulation Test)		
DFTC1120	SG - Final Electrical Level 1 & 2 Testing (Functional)	25	27-Jun-26	22-Jul-26	SG - Final Electrical Level 1 & 2 Testing (Functional)		
DFTC1140	SG - Final FS AFA and FS Water System Test	24	27-Jun-26	21-Jul-26	SG - Final FS AFA and FS Water System Test		
FTC1050A	WB Tunnel Zone A - TVS Flow Test	9	05-Jul-26	14-Jul-26	WB Tunnel Zone A - TVS Flow Test		
FTC1050B	WB Tunnel Zone B - TVS Flow Test	10	14-Jul-26	24-Jul-26	WB Tunnel Zone B - TVS Flow Test		
FTC1040	TBM Tunnel - FS AFA and FS Water System Test	31	17-Jul-26	17-Aug-26	TBM Tunnel - FS AFA and FS Water System Test		

- ◆ Milestones
- █ Planned Bar
- █ Actual Bar

ED/2018/04 Trunk Road T2 and Infrastructure Works  
for Developments at South Apron  
Three Months Rolling Programme (Jun26-Aug26)



Date	Revision	Checked	Approved

Activity ID	Activity Name	Dur	Start	Finish	2026		
					Jun	Jul	Aug
DFTC1050	Road Level - Final LV Power On	1	17-Jul-26	18-Jul-26			■ Road Level - Final LV Power On
DFTC1090	SG - Final FS Level 1 & 2 Testing (Functional)	14	17-Jul-26	31-Jul-26			■ SG - Final FS Level 1 & 2 Testing (Functional)
DFTC1130	SG - Final Air Flow Measurement	23	17-Jul-26	09-Aug-26			■ SG - Final Air Flow Measurement
FTC1020	TBM Tunnel - Emergency Power Supply System T&C	30	18-Jul-26	17-Aug-26			■ TBM Tunnel - Emergency Pow
DFTC1150	SG - Emergency Power Supply System T&C	28	21-Jul-26	18-Aug-26			■ SG - Emergency Power Sup
FTC1050C	EB Tunnel Zone C - TVS Flow Test	10	24-Jul-26	03-Aug-26			■ EB Tunnel Zone C - TVS Flow Test
FTC1050D	EB Tunnel Zone D - TVS Flow Test	10	03-Aug-26	13-Aug-26			■ EB Tunnel Zone D - TVS Flow Test
FTC1050E	EB/WB - Final System Integrated Test	13	13-Aug-26	26-Aug-26			■ EB/WB
<b>Pre-Level 3 Testing</b>		26	26-May-26 A	20-Jun-26			
A229451300	WB Tunnel Zone A - Pre-Level 3 TVS Test	26	26-May-26 A	20-Jun-26	■		WB Tunnel Zone A - Pre-Level 3 TVS Test
<b>15 Projectwide Statutory Inspection and Handover</b>		85	19-Jul-26	12-Oct-26			
<b>Proposed Tunnel Fire Services Inspection (subject to FSD)</b>		47	26-Aug-26	12-Oct-26			
FSI1000	Fire Service Inspection Period by FSD (subject to FSD)	47	27-Aug-26	12-Oct-26			■
<b>Proposed 47d FSI Detail Programme (subject to FSD arrangement)</b>		13	26-Aug-26	08-Sep-26			
FSI1090	FSI - Endorsement	0		26-Aug-26			◆ FSI - En
FSI1010	FSI - FS Installation inspection at Service Gallery	13	27-Aug-26	08-Sep-26			■
FSI1020	FSI - FS Installation inspection at Road Tunnel	13	27-Aug-26	08-Sep-26			■
<b>Incentive Payment Milestones</b>		0	19-Jul-26	19-Jul-26			
IPM0021	M3 - Seawall Reinstatement Area ready for handover to VTC & EB	0		19-Jul-26*			◆ M3 - Seawall Reinstatement Area ready for handover to VTC & EB Remaining CW Completed (OHVD c
<b>Infrastructure Works</b>		137	30-Apr-26 A	14-Sep-26			
<b>10 Lam Chak Street / Kai Hing Road Modification</b>		137	30-Apr-26 A	14-Sep-26			
<b>LCS/KHR Modification (KD-19)</b>		137	30-Apr-26 A	14-Sep-26			
<b>Stage 2 Works - New Roundabout</b>		137	30-Apr-26 A	14-Sep-26			
LCS10028	LCS/KHR - Advanced Drainage Construction	93	30-Apr-26 A	01-Aug-26	■		LCS/KHR - Advanced Drainage Construction
LCS10020	LCS / KHR - Site Formation	16	02-Aug-26	17-Aug-26			■ LCS / KHR - Site Formation
LCS10025	LCS / KHR - Drainage	28	18-Aug-26	14-Sep-26			■
<b>Outstanding Works</b>		1645	19-Feb-23 A	21-Aug-27			
<b>Site Demobilization &amp; Land Lot Handover</b>		183	02-May-26 A	31-Oct-26			
<b>Barging Point at Portion P</b>		30	30-Jul-26	02-Sep-26			
BP1000	Barging Point - Dismantling	30	30-Jul-26	02-Sep-26			■
<b>Area 3B-2</b>		76	01-Aug-26	31-Oct-26			
SY1000	Precast Storage - Gantry Crane Decommissioning	76	01-Aug-26*	31-Oct-26			■
<b>Area 3B-3</b>		31	01-Jun-26	08-Jul-26			
MP1010	Mortar Plant - Site clearance	31	01-Jun-26	08-Jul-26	■		Mortar Plant - Site clearance
<b>Area 3B-4</b>		122	01-Jun-26	30-Sep-26			
A229451110	Tunnel IS/CP/Plant Storage Area Clearance	92	01-Jun-26*	31-Aug-26	■		
A229451260	Tower Crane Demobilisation	45	01-Jun-26*	15-Jul-26	■		Tower Crane Demobilisation
A229451280	External Team Amenities Clearance	61	01-Aug-26*	30-Sep-26			■
<b>Area 3E-1</b>		61	01-Aug-26	30-Sep-26			
A229451290	External Team Amenities Clearance	61	01-Aug-26*	30-Sep-26			■
<b>Area 3E-2</b>		104	02-May-26 A	03-Sep-26			
STP1000	Slurry Treatment Plant - Dismantling	73	02-May-26 A	29-Jul-26	■		Slurry Treatment Plant - Dismantling
STP1010	Slurry Treatment Plant Area - Site clearance	31	30-Jul-26	03-Sep-26			■
<b>Maintenance Period</b>		1645	19-Feb-23 A	21-Aug-27			
<b>S20 Establishment (KD-30)</b>		1200	19-Feb-23 A	02-Jun-26			
A20602	Road S20 - Establishment Period	1200	19-Feb-23 A	02-Jun-26	■		Road S20 - Establishment Period
MP30	KD-30 - Completion of Section 10A - Road S20 Establishment wor	0		02-Jun-26			◆ KD-30 - Completion of Section 10A - Road S20 Establishment works
<b>HBR/CYS/WCR Establishment (KD-35)</b>		365	01-Jun-26	21-Aug-27			
MP35	HBR / CYS / WCR Junction Moditication - Establishment works	365	01-Jun-26	21-Aug-27	■		
<b>LCS/KHR Establishment (KD-32)</b>		365	01-Jun-26	31-May-27			
MP32	LCS / KHR - Portion N2 - Establishment works	365	01-Jun-26	31-May-27	■		

◆ Milestones  
■ Planned Bar  
■ Actual Bar

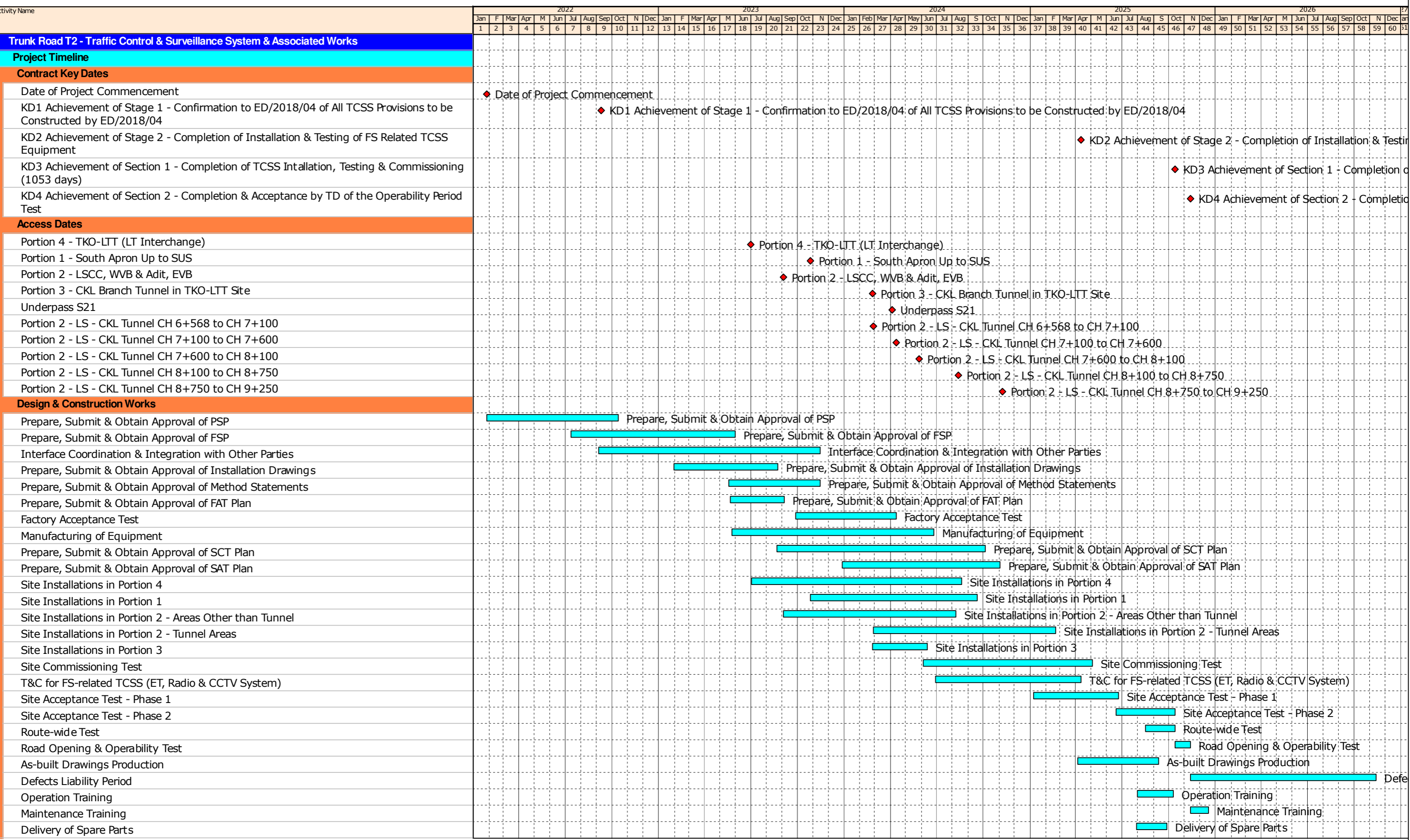
ED/2018/04 Trunk Road T2 and Infrastructure Works  
for Developments at South Apron  
Three Months Rolling Programme (Jun26-Aug26)



Date	Revision	Checked	Approved

**CONTRACT NO. ED/2020/03**  
**TRUNK ROAD T2**  
**TRAFFIC CONTROL SURVEILLANCE SYSTEM AND ASSOCIATED WORKS**  
**OVERALL PROJECT TIMELINE**

Appendix III A - Overall Project Timeline



Planned Activities  
Milestone

Date	Revision	Checked	Approved
14-Oct-22	Rev. B	FC	
05-Dec-22	Rev. C	FC	
18-Apr-23	Rev. D	FC	